



Success through co-operation

The EnergyRegion.NRW cluster stands for innovative power, tradition, independence and openness to technology. The EnergyRegion.NRW brings together 3,300 companies and institutions in the sector. Three quarters of the companies are small and medium-sized enterprises. Furthermore the EnergyRegion.NRW cluster encompasses 64 universities, 107 institutes and 94 associations. 5,200 specialists are actively involved in the cluster's working groups and networks. It supplies 30,000 multipliers and decision-makers with information and results.

EnergyRegion.NRW incorporates eight networks covering the following subject areas

- power plant technology,
- fuel cells and hydrogen,
- biomass,
- energy-efficient and solar construction,
- fuels and engines of the future,

- photovoltaics,
- geothermics and
- wind power.

Unity of management

The management of the EnergyRegion.NRW is in the hands of the EnergyAgency.NRW. The cluster managers and a team of eight network managers are competent and experienced contact persons acting for players in the EnergyRegion.NRW, with other partners at home and abroad. The networks' partners are supported by the cluster management from the initial idea to market launch in projects which are cross-company and possibly accompanied by research institutions. In addition the cluster management ensures close consultation with the energy research cluster. Further information can be obtained on the Internet:

www.energieregion.nrw.de

Imprint

EnergyRegion.NRW
c/o Ministry of Economic Affairs and Energy
of the State of North Rhine-Westphalia
Haroldstraße 4
40213 Düsseldorf, Germany
Phone: +49 (0) 211 86642-0
Fax: +49 (0) 211 86642-22
info@energieregion.de
www.energieregion.de

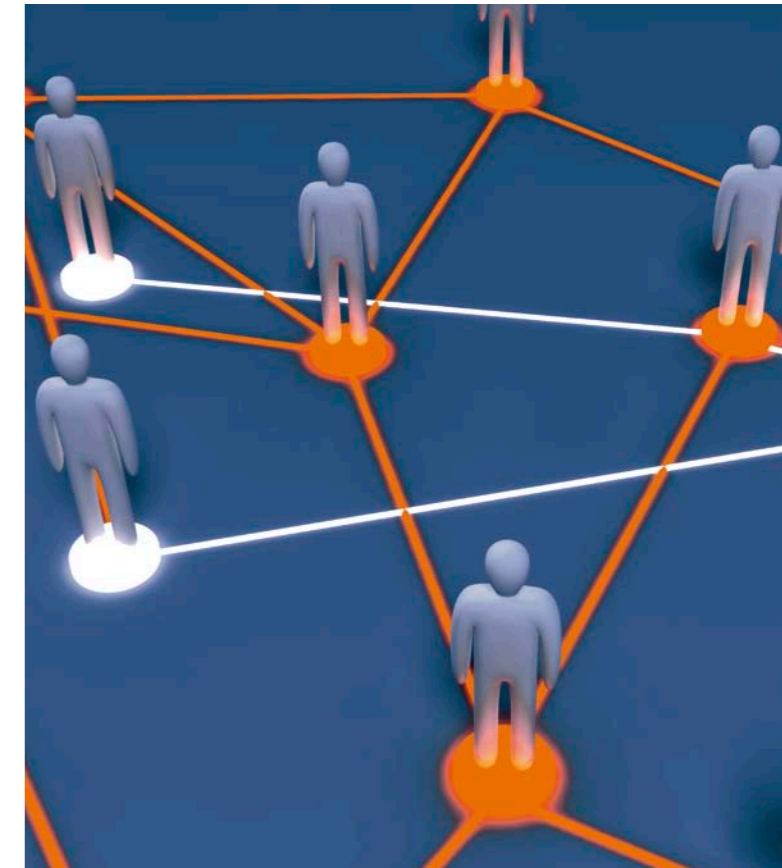
© EnergyRegion.NRW 10/2009

www.exzellenz.nrw.de

Excellence NRW stands for the cluster strategy at the industrial and innovative location of North Rhine-Westphalia. The state government intends to reinforce strengths and systematically expands the features of excellence in North Rhine-Westphalia. The aims of the cluster policy are to create a favourable environment for innovations which will boost the competitiveness of industry and stimulate growth and employment. You can learn more about the state's cluster strategy and the 16 clusters in North Rhine-Westphalia at www.exzellenz.nrw.de

Picture sources

title: © Spectral-Design – Fotolia.com
power station: © RWE AG
wind power station: © GaToR-GFX – Fotolia.com
power line: © Simon Kraus – Fotolia.com



EnergyRegion.NRW
Forging networks,
combining forces

Energy and the economy in North Rhine-Westphalia

North Rhine-Westphalia is an energy region with a tradition. Since industrialisation the provision and exploitation of energy have exercised a major influence on economic and social development here.

The mix of global players, medium-sized businesses and research institutions in the region means that North Rhine-Westphalia is an ideal location with a unique concentration of competencies which can provide forward-looking solutions in the domain of the energy economy. Around 1.5 million people work in energy-intensive establishments in North Rhine-Westphalia.

In global, fast and mobile markets, the classic co-existence of industry, science and public bodies often isn't enough. Innovation potentials can be realised mainly by the greater networking of those involved in clusters along the – partly cross-sector – value chain.

The activities of the energy cluster – called EnergyRegion.NRW – therefore concentrate on accelerating innovation processes and the optimised market launch for innovative products.

Doing, shaping, profiting – together

The work of the clusters EnergyRegion.NRW is aimed at players from:

Research and development

To develop practice-based and application-oriented solutions for tomorrow's energy and climate protection challenges, the R&D institutions have to network more closely with the energy economy companies in North Rhine-Westphalia. The EnergyRegion.NRW provides a platform to enable them to do this.

Small and medium-sized companies

In the energy economy cluster small and medium-sized companies can network reliably in a way that is open to technology and involves no single industrial interests. The EnergyRegion.NRW offers small and medium-sized companies in North Rhine-Westphalia, among other things, cross-company projects, the linking of partners, neutral, first-hand information and access to political institutions.

Large companies

By making intensive use of the structures of the EnergyRegion.NRW and networking with partners in the North Rhine-Westphalian energy economy, large companies gain a major advantage over their international competitors. Large companies profit in the EnergyRegion.NRW from co-operating with network partners to identify



small, innovative companies, to extend the range of what they are offering and to regionalise their performance competency.

Political decision-makers

With a transparent and up-to-date transmission of information from authorities and political decision-makers to industrial companies, the location of North Rhine-Westphalia profits to a particular degree. The cluster management and networks of the EnergyRegion.NRW stand for an open exchange with authorities and political decision-makers. The EnergyRegion.NRW thus becomes an interface between the energy economy and people in North Rhine-Westphalia. The ways local authorities profit from the EnergyRegion.NRW include a structural strengthening of the region, reinforcement of the economic performers' ties with the region and therefore an upgrading of their location.

